

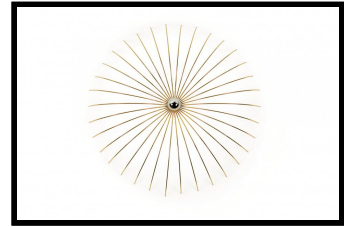
**01** **AUTOBAN**  
266 FLYING SPIDER  
241 SPIDER

**DE LA ESPADA**





266 FLYING SPIDER

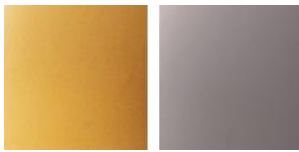


241 SPIDER





**MATERIAL OPTIONS**



**266 FLYING SPIDER**

Based on Autoban's iconic Spider Lamp, Flying Spider is a pendant full of impact. Designed by Autoban and manufactured by De La Espada for the Autoban brand.

**SIZE**

W89 × H20 cm

W35 × H7 4/5 "

drop length of complete fitting 141 cm | 55 1/2 "

**SPECIFICATION**

Available in gold-plated or chrome-plated steel with red fabric-covered cable. Gold plating is 24 karat. Recommended bulb is crown mirrored bulb E27 Edison screw, maximum 60W. A classic E27 halogen bulb may be used if you are unable to obtain a crown-mirrored bulb, making the shadow effect less pronounced. Bulb not included. Fixture weight: 3kg/6.6lbs  
Assembly: Flying Spider Installation

0  
3A  
U  
T  
O  
B  
A  
N**MATERIAL OPTIONS****241 SPIDER**

Spider has a sculptural form that provides ambient light while casting striking shadows. A dimmer allows control over the intensity of the light. Designed by Autoban and manufactured by De La Espada for the Autoban brand.

**SIZE**

241M

D60 × H10 cm

D23 3/5 × H4 "

241L

D80 × H10 cm

D31 1/2 × H4 "

**SPECIFICATION**

Available in gold-plated or chrome-plated steel. Gold plating is 24 karat. Recommended bulb is crown mirrored bulb E27 Edison screw, maximum 60W. A classic E27 halogen bulb may be used if you are unable to obtain a crown-mirrored bulb, making the shadow effect less pronounced. Bulb not included. The lamp has a power cable 3 metres (9'9") in length with a dimmer switch. If preferred, an electrician could alternatively hardwire the lamp to your electrics. Fixture weight: 241M - 2kg/4.4lbs, 241L - 2.4kg/5.3lbs. Assembly: Spider Installation